

# I50S Softlight 5600k, 3100k

## TV broadcast

A new thin size LED studio softlight designed specifically for TV broadcast lighting. Higher than 90 CRI and consistent cool white - 5600k and warm white - 3100k in a soft even output. Conventional cooling without fans to offer a quiet operation environment during TV programme recording.

A big 1075 cm<sup>2</sup> illuminance output area, 50 degree beam angle for a smooth even output to a far distance object.

Rigid, strong and light weight aluminium body with heavy duty yoke arm. Aluminium heat sink back cover to form an efficient smart internal cooling system.

High performance optical system formed by high quality PMMA convex lens and frost panel filter.

With on board full color LCD display, all necessary data such as DMX address, Intensity, Cd value, CRI, LED/Tungsten mode, Curve type, CCT and internal temperature can be viewed at all times. With the simple "touch and turn" design, all parameters can be easily adjusted.



### Features

- Fixed and stable Color Temperature
- High CRI rate, typical 94(3100k), 93(5600k)
- High Television Lighting Consistency Index (TLCI)
- Convection Cooling
- Real time Intensity (Cd) & CRI display
- Selectable LED or "Tungsten" response
- Various Dimming curves available
- Fine detail Color LCD display for all necessary information
- Easy "touch & turn" operation
- Optional accessories available
- PowerCon AC and 5 pin DMX in & thru connectors
- Local and DMX-512A(RDM) control
- CE marked

**PHILIPS**  
**Strand Lighting**

### SPECIFICATION SUBMITTAL

CONSULTANT:	PROJECT NAME:	MODEL NUMBER   QUANTITY:
<input type="text"/>	<input type="text"/>	<input type="text"/>
DATE:	PROJECT NUMBER:	APPROVED BY:
<input type="text"/>	<input type="text"/>	<input type="text"/>

## Specifications

### Optics

LEDs: 432 mid-power LED  
 Lumen: 12000 lm  
 Illuminations: 580 lx at 5M  
 Beam Angle: 50 degree  
 CCT: 3100k +/- 100k  
 5600k +/- 300K  
 CRI: typ. 94 (3100k)  
 typ. 93 (5600k)  
 TLCI: >94 (3100k)  
 >96 (5600k)

### Physical

Signal: 5 pin XLR in, thru connectors ;  
 DMX-512A(RDM)  
 Power: PowerCon AC in, thru connectors ;  
 90 - 240VAC / 150W(max)  
 Dimensions : 593mm(W) x 327mm(H) x 117mm (D)  
 Weight: 8.4Kg (net body)

CE Marked

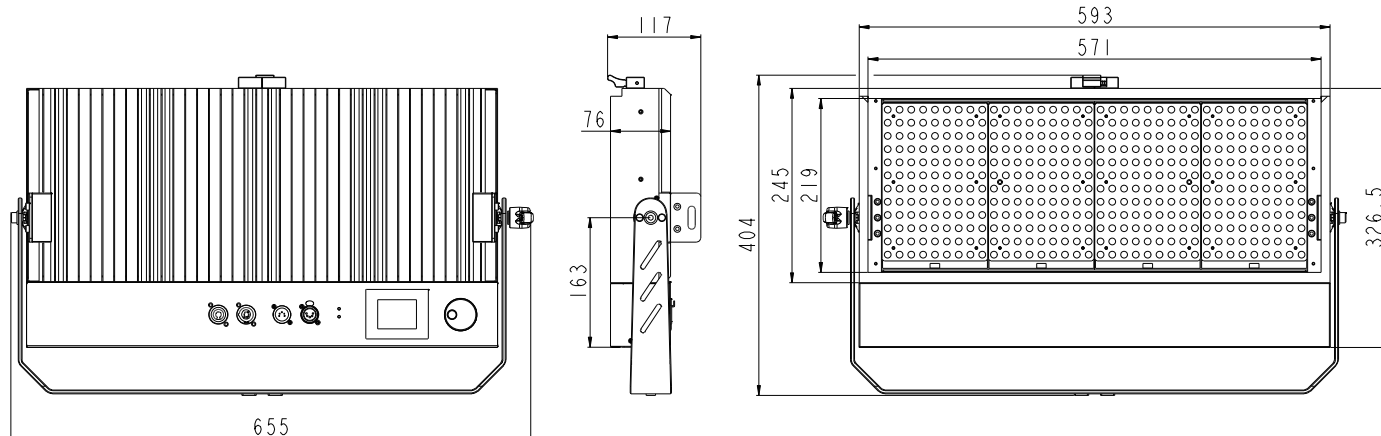
## Photometric Information

	Stand alone	20 deg honeycomb	36 deg honeycomb
Beam Angle	50	20	36
Field Angle	88	39	67
Central Intensity	12000Cd	7000Cd(loss 41.7%)	9850Cd(loss 18%)
Illuminance @ 5m	580 lx	320 lx	480 lx

## Ordering Information

I50S5600k Strand I50S Softlight 5600k TV Broadcast, 100 - 240VAC, CE  
 I50S3100k Strand I50S Softlight 3100k TV Broadcast, 100 - 240VAC, CE  
 I50SBD8L Strand I50S 8 - leaf Barn door with filter clip  
 I50SHC36 Strand I50S Honeycomb - 36 deg  
 I50SHC20 Strand I50S Honeycomb - 20 deg

## Dimensions



Philips Entertainment U.S.  
 10911 Petal Street  
 Dallas, TX 75238  
 Tel: +1 214647 7880  
 Fax: +1 214647 8030

Philips Entertainment Lighting Asia Limited  
 Unit C, 14/F, Roxy Industry Centre  
 No. 41 - 49 Kwai Cheong Road  
 Kwai Chung, N.T. Hong Kong  
 Tel: +852 27969786  
 Fax: +852 27986546

Philips Entertainment Group Europe  
 Rondweg Zuid 85  
 Winterswijk 7102 JD Netherlands  
 Tel: +31 543-542343  
 Fax: +31 53 4500425

Philips Entertainment New Zealand  
 19 - 21 Kawana Street, Northcote  
 Auckland 0627, New Zealand  
 Tel: +64 9481 0100  
 Fax: +64 9481 0101